

A woman with blonde hair, wearing a grey long-sleeved shirt, stands in a modern elevator with her arm around a young boy. The boy is wearing a green and blue striped long-sleeved shirt, a black helmet, and a black wrist brace. He is holding the elevator handrail. The elevator interior has dark wood paneling and a stainless steel door. The lighting is bright and modern.

AN INVESTMENT IN YOUR BUILDING'S FUTURE

KONE elevator modernization

WHY MODERNIZE YOUR ELEVATOR?

Just like any other piece of machinery, your elevator will need modernizing at some point during its lifetime. Modernization ranges from smaller component upgrades or replacement of individual systems, to full elevator replacement. It is an investment that pays off in increased safety, improved reliability and style, and lower energy costs.



HIGH ENERGY COSTS? TOO MANY REPAIRS?

KONE Ele
Esc

By modernizing your equipment with KONE you can:

- Increase the value of your property
- Have lower energy costs and better eco-efficiency
- Decrease unexpected costs and extend equipment lifetime
- Comply with the latest safety regulations



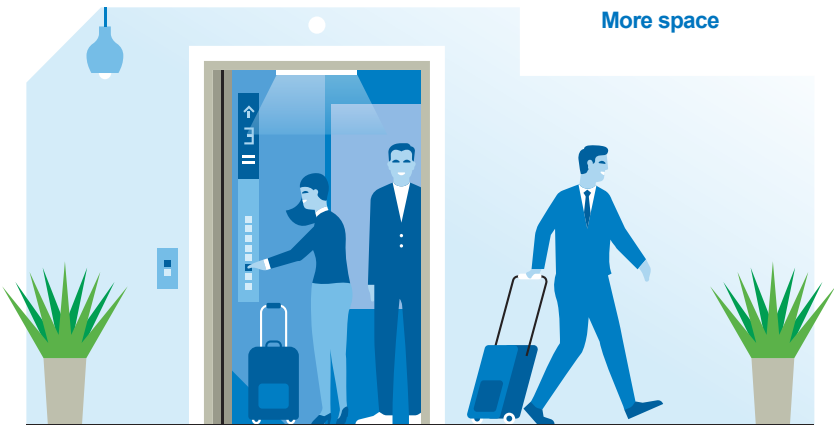
NOISY AND UNCOMFORTABLE? LONG WAITING TIMES?

With a KONE modernization solution you will get:

- A safer, smoother, and quieter ride
- Up to 50% more space in your elevator and improved accessibility
- A fresh look and feel
- Improved capacity and performance

UP TO
50%

More space



WORRIED ABOUT DISRUPTION? WANT TO AVOID SURPRISES?

By working with KONE you benefit from:

- A professionally managed, hassle-free modernization project with minimum disturbance to tenants and visitors
- A clear picture of your equipment's condition and a plan on how best to modernize it
- High-quality modernization solutions tailored to your needs
- Professional, local service backed by global expertise

50,000

Modernization
installations
yearly

CONTACT US TO SET UP A COMPREHENSIVE ELEVATOR ASSESSMENT.

To find out more about our modernization solutions and arrange your free elevator assessment, please contact:

<KONE contact details>

<Office street address>

<Post code, City>

www.kone.com

MODERNIZING YOUR ELEVATOR

We offer three different levels of modernization: component upgrades, modular modernization, and full replacement. We can carry out a KONE Care for Life™ assessment to thoroughly examine your elevator's current condition and help you decide what level of modernization you need.

1

KONE CARE FOR LIFE ASSESSMENT

A free, no-obligation assessment of your elevator's current condition.

2

CONDITION REPORT

A clear report that details the elevator condition, and highlights any areas that need attention.

3

KONE ASSET MANAGEMENT PLAN

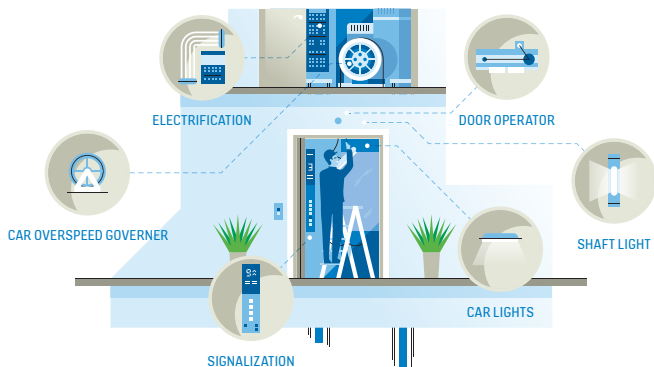
A plan that clearly sets out the actions you should take to keep your equipment running reliably.

COMPONENT UPGRADES

Component upgrades are a quick and cost-effective way to make small improvements to your elevator. Upgrades can cover things like the door operator, signalization, or lighting system.

We recommend component upgrades if your elevator:

- Has noisy doors
- Is fitted with outdated and impractical signalization
- Is more than 10 years old



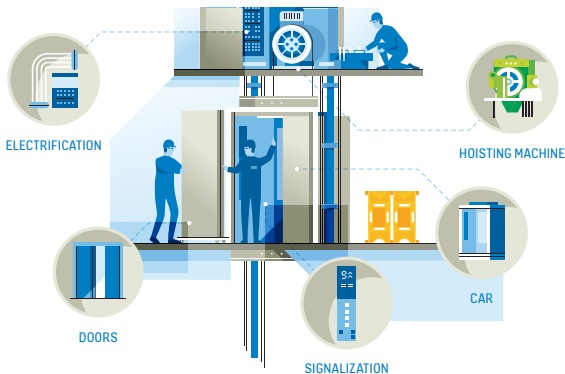
10 YEARS

MODULAR MODERNIZATION

Modular modernization significantly improves the performance of your elevator by updating entire systems. This type of modernization applies to things like the hoisting machinery, electrification system, or doors.

We recommend modular modernization if your elevator:

- Consumes a lot of electricity
- Does not level properly on landing floors
- Has an impractical or outdated interior
- Is between 15 and 20 years old



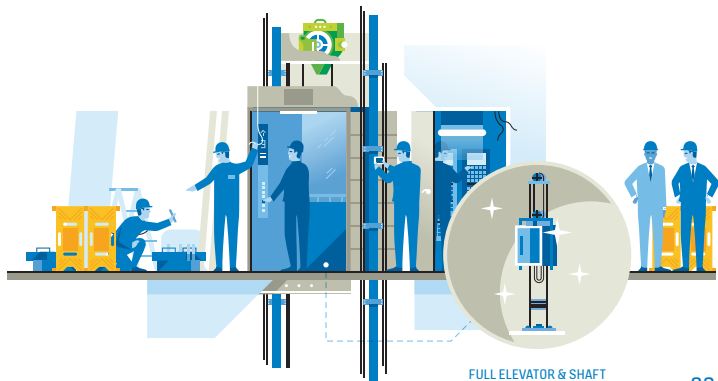
20 YEARS

FULL REPLACEMENT

With full replacement we completely remove your old elevator and install a brand new one in your building's existing elevator shaft.

We recommend full replacement if your elevator:

- Has a small, cramped car
- Takes a long time to travel between floors
- Is often out of order
- Is 25 years old or more



FULL ELEVATOR & SHAFT

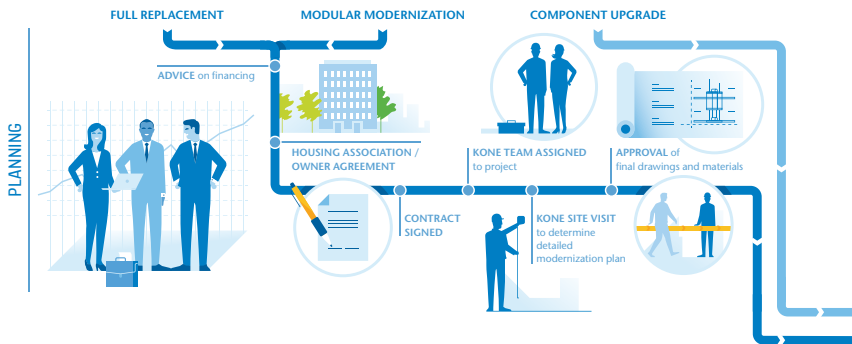
30 YEARS

A HASSLE-FREE PROCESS

With us your project runs smoothly from start to finish.

Once we've identified the best modernization solutions for your building, we provide a cost estimate and can advise you on project financing. A dedicated KONE team visits the site before finalizing the project plan.

Installation is carried out so that it causes as little disruption as possible to life in your building. As well as installing your elevator, we can keep it running smoothly for its entire lifespan with KONE maintenance service.



INSTALLATION



LOBBY AREA
CONSTRUCTION



INSTALLATION of new equipment



PROTECTION
of work area

AGREEMENT
of working hours,
access and
storage areas

SAFETY PLAN
for safe access



SCHEDULE
for final work
agreed



NEW MATERIALS
DELIVERED to site

FINAL CLEANING



SHAFT PREPARATION
for installation



DISMANTLING
AND RECYCLING
of old equipment



INFORMING
building tenants /
residents of schedule

COMPLETION

PREHANDOVER CHECK
AND QUALITY INSPECTION
+ 3RD PARTY INSPECTION
if needed



FINAL HANDOVER
with technical and
safety information
and training



ELEVATOR IN USE



MAINTENANCE

Elevator out of service